



Happy
Holidays

Blueberry School
1532 Parkland Drive,
Parkland County T7Z 1Y6

PH: 780-963-3625
Fax: 780-963-4491

Email:

blueberry@psd70.ab.ca
blueberry.absence@psd70.ab.ca

Website:

blueberry@psd70.ab.ca

Principal:

Mrs. Sheryl Bridgeman

Vice Principal:

Mrs. Michelle Visscher

Please see the [website](#) for
Upcoming Events and Important
Information!

Facebook:
Blueberry School



MESSAGE FROM ADMINISTRATION:

Hello Blueberry Families.

As we find ourselves in yet another transition due to COVID-19, we would like to take this time to thank you for your ongoing support and kindness. We are grateful to all those families who have sent messages of encouragement to our staff as we support students learning through these trying times. We understand that AHS guidelines have changed what school looks like, but together we can keep each other safe and keep our students learning. This typically exciting season is bittersweet as our building will be missing an integral part as Grade 7-9 students move to at home learning until after Christmas Break.

With the announcement of increased health measures from Premier Jason Kenney on November 24th, our school community must once again be flexible and supportive of one another. Here are some points of clarity from the Premier's announcement:

- Grades 7-12 students move to at-home learning, starting Monday, November 30, 2020 with an anticipated return to in-person learning on Monday, January 11, 2021.
- ECS - Grade 6 students to continue in-person learning until our Christmas break.
- Christmas Break is NOT extended. Our school calendar breaks for Christmas on December 18, 2020 and runs until January 3, 2021.
- All students complete one week of at home (virtual) learning January 4 - 8, 2021.
- All students return to in-person learning Monday, January 11, 2021.



MESSAGE FROM ADMINISTRATION:



We understand that these are stressful times. There are several community resources which are offering support to students and families at little to no cost.

- [Winter programming for students](#)
- [Community Connectors](#)
- [Little Oaks Psychology](#)

Our staff are excited to enter into the holiday season. We know that in the past some families have chosen to send in treats, crafts, or gifts as part of a celebration of the season. When considering sending anything to school during the holiday season, we are asking our staff and families to continue to follow AHS guidelines. Here are a few things to consider:



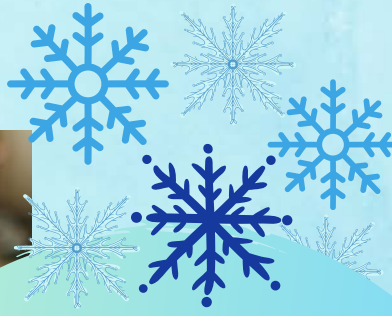
- There will be no in-person Christmas concert this year. We are currently reimagining what a concert could look like this year. We appreciate your patience as we work through this.
- We cannot accept homemade items from students at the school. Although these are wonderful gestures, please do not send homemade items to share with friends. Staff will also not share homemade items with students.
- Please do not send any food items to school. Unfortunately we cannot accept food items from outside the school.
- Some staff are using this season to promote the gift of giving, by supporting local community partners such as the Stony Plain Kinsmen Christmas Hamper program online, as opposed to physical gifts for students




Report Cards will be on the PowerSchool Parent Portal on Friday, Dec 3 by 3:00 pm.

If you have any questions please do not hesitate to contact Sheryl or Michelle at the school at 780-963-3625.





**REMINDER:
STUDENTS SHOULD LEAVE
AT HOME ITEMS SUCH AS:**



**POKEMON CARDS, TOYS,
BLANKETS, ETC. TO
MAINTAIN SCHOOL
CLEANLINESS.**



**IF THEY ARE BROUGHT TO
SCHOOL THEY WILL BE
STORED FOR PARENT
PICKUP.**





Away

Student Absences

Thank you to all the parents who are either phoning in or e-mailing us with student absences.

As we continue to work to ensure the safety of all of our students at Blueberry School, it is imperative that we are aware when they are absent from school.

We ask that parents email their child's absence to Blueberry.Absence@psd70.ab.ca

Please include your child's full name, homeroom and reason for the absence.

If you do not have access to email please phone the school (780-963-3625) and leave a message on the Attendance voicemail (Option 1).

Pre-order
2020/21
Yearbook

2019/20
Yearbook
was sent
home with
students
Gr 7-9

View & Order your pictures

ONLINE ONLY

www.SmartOrders.ca

Retake orders will be in before Christmas if you ordered before the deadline(s)!

Zen Den is back!

Blueberry School is offering a program to support children experiencing difficulties with anxiety. Activities focus on anxiety reduction (e.g., relaxation exercises) and social skills development (e.g., role playing positive communication skills). The activities and skills are taught in an engaging and developmentally appropriate manner.

If you believe your child would benefit from this program please contact your homeroom teacher, Sheryl Bridgeman or Michelle Visscher for more information. Zen Den will be held by Zoom for the next while.



**POWERSCHOOL PARENT PORTAL -
IS YOUR INFORMATION UP TO DATE?**

It is important that we have the most current information on file and TWO Emergency Contacts. Please take a few minutes to log into your PowerSchool-Parent Portal account and make any necessary changes under the Family Information tab. If there are changes to Guardianship/Custody, please contact the school office.

School fees can also be paid through Powerschool. If you have any questions about Powerschool or need help creating an account, please contact Tracy Davis in the school office at 780-963-3625.

**Time to Dress for
the weather!**

As we move into winter and days get cooler students will need to be dressed appropriately in order to safely enjoy outdoor activities such as recess and physical education classes, as some of them take place outdoors.

A warm coat, mitts and a hat are musts to keep in the backpack at this time of year.

Please label your boots and any other articles.



**Picking up
your child(ren)?**

Please call the school upon arrival and give us 5 minutes to bring your child to the door to meet you!

AHS - IMMUNIZATION

Grade 6 Program

December 16, 2020 - Grade 6

February 2, 2021 - Grade 9 and

catch up from fall

May 27, 2021 - Grade 6

Helpful tips for Pain Management click [here](#).

School Fees

See the [link](#) for the 2020-21 School Fee listing.

Please note that fees will be applied as the activities occur. If there are credits on the account, they will be applied to new charges.

Missing items?

**Lost
&
Found**





Alberta Health Services



Information for Families with Children in Isolation: Information for families with children in isolation is now available on this webpage: ahs.ca/isolation

Click the underlined text to link to the info!

Guidance for Parents of Children Attending School – Translated versions. The AHS Guidance for Parents of Children Attending School and/or Childcare found at ahs.ca/parentcovidguide

Monthly Newsletters for Families:
The [AHS.ca/COVIDSchool](https://ahs.ca/COVIDSchool) webpage has been updated with the December newsletters for families with Children & families with Teens.



December 2020 - 5 easy ways to cultivate wellness at home with [Children](#) and with [Teens](#).

Check out information regarding free on-line programming for parents/caregivers of children and youth for December!



*Stony Plain
& West Parkland
Christmas Hampers 2020*



**Kinsmen Club
of Stony Plain**

This year we are asking that you support this great cause in one of the following ways. Please watch these wonderful videos created by our students!

Caring Kids share how to contribute to the Kinsmen Christmas Hampers - watch here!

Fill Santa's Sleigh and Stony Plain's Hearts video - watch here!

WHEN YOU MAKE A CONTRIBUTION, EMAIL YOUR CHILDS HOMEROOM TEACHER SO WE CAN TRACK OUR SCHOOL DONATIONS! Do not send any items to school and you do not need to indicate what or how much you contributed

You can help support your community by donating to the Kinsmen Club:

1. Monetary donations or local grocery store gift cards which will go towards a family "upsized" December food hamper.
2. Gift cards or new, unwrapped gifts for children 17 and under (local gift cards are ideal for 10+). Sport Chek, Winners, Superstore

Ways to donate to Kinsmen:

- All monetary, gift card and toy donations are accepted!
- Donate at over 50 designated business locations
- Cheques can be made to: Stony Plain Kinsmen Christmas Hampers - they can be picked up or you can mail to PO Box 2231, Stony Plain, AB T7Z 1X7
- Gifts/gift cards will be organized and assembled for each family the week of December 14/20 at the Stony Plain Heritage Pavilion.

More info: www.stonyplainkinsmen.ca

Call Ed Berney at 780.915.6934

THANK YOU FOR YOUR SUPPORT!



BLUEBERRY SCHOOL FUNDRAISING COMMITTEE

Thank you to everyone who participated in our Winter Fundraiser, we raised just over \$2100.

Purdy's orders will be available for **pick up Dec 3 & 4th**

call 780-982-3172 to set up a time.
contactless pick up - location will be given upon appt.



&



DON'T FORGET

FUNDRAISERS THAT RUN ALL YEAR



FlipGive

SHOP ONLINE raise money for the school

buy e-gift cards, shop from your favorite stores
click the link below to start your shopping

www.flipgive.com/f/429820



LABELS because kids loose everything

label your kids school supplies, clothes, lunch
containers and so much more...
click the link below to start your order

www.oliverslabels.com/blueberryschool

If you have questions email blueberryfundraisingcommittee@gmail.com



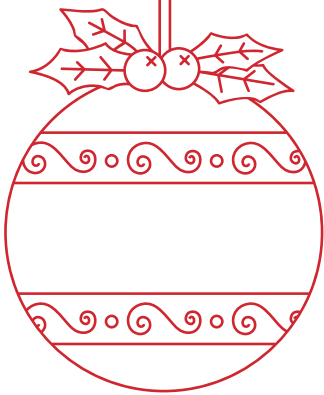
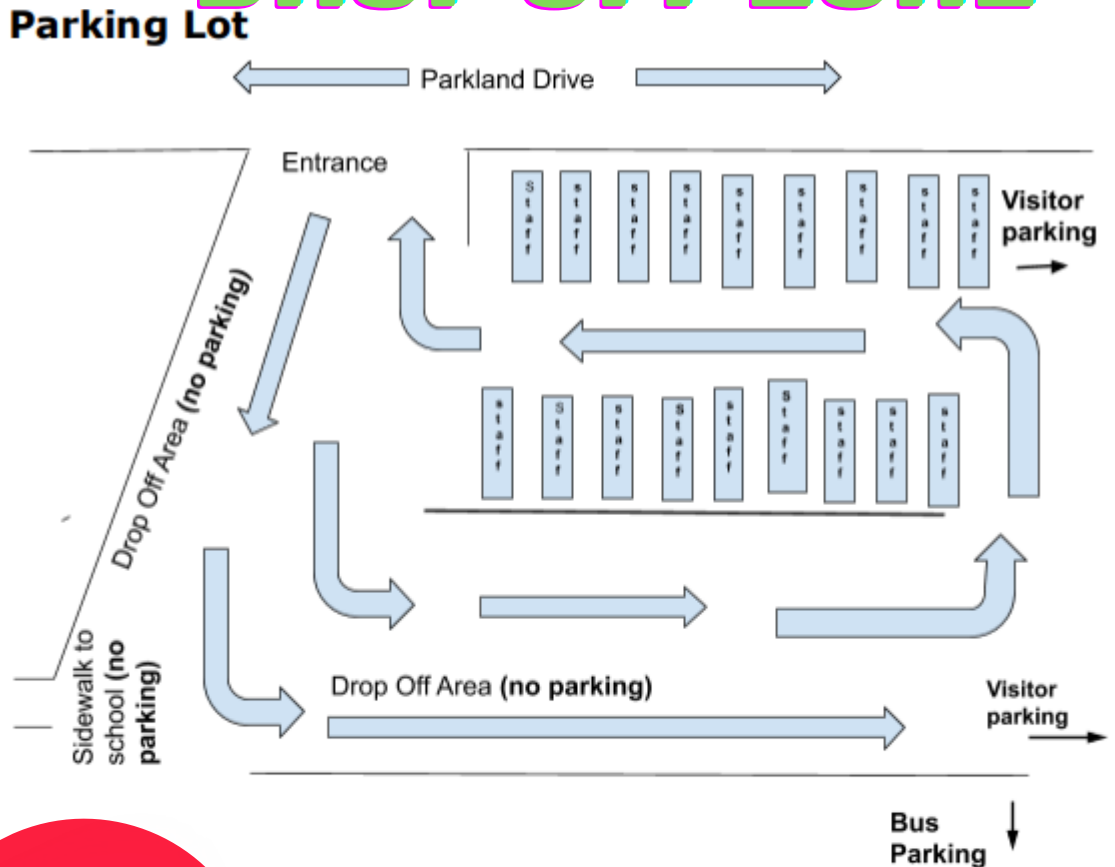
STRONG FAMILIES

Take a few minutes to download the link in the email and read the Strong Families Series and check out the great upcoming free sessions and other free community activities for kids!





PARKING & DROP OFF ZONE



When dropping off your children, please go around to the Drop Off Area (see above), and then continue around to the parking lot exit. Please **do not** make U-turns at the entrance after you drop your children off. Our front parking lot goes in a **one-way** direction.

If you are parking to come to the school with your children, please use the far west side of the front (south) parking lot to park after the designated staff parking spots. There is no parking in the drop-off area.

The back parking lot, where busses come in, is closed to vehicles while the busses are there (arrival/dismissal times).

Thank you for making our parking lot a safe environment!

